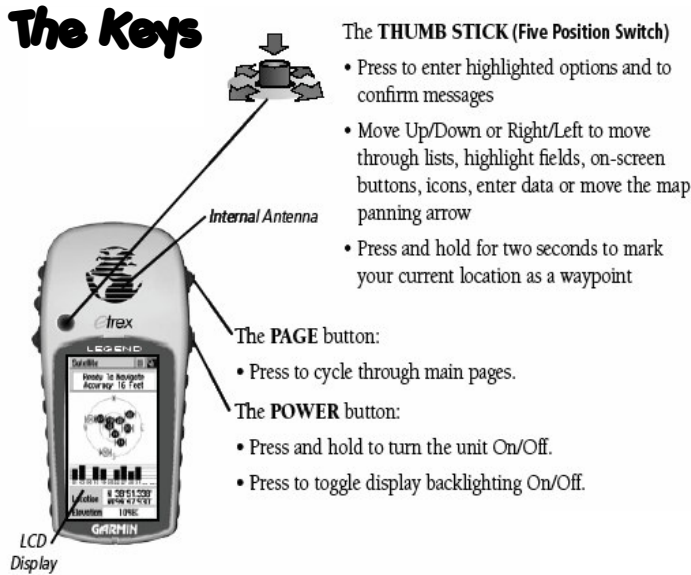


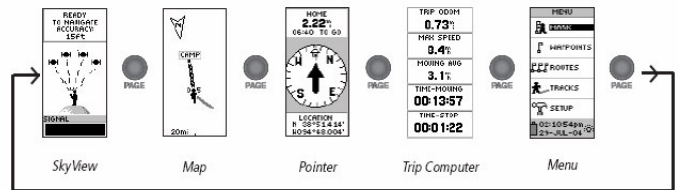
Garmin eTrex Legend Basics

The Keys

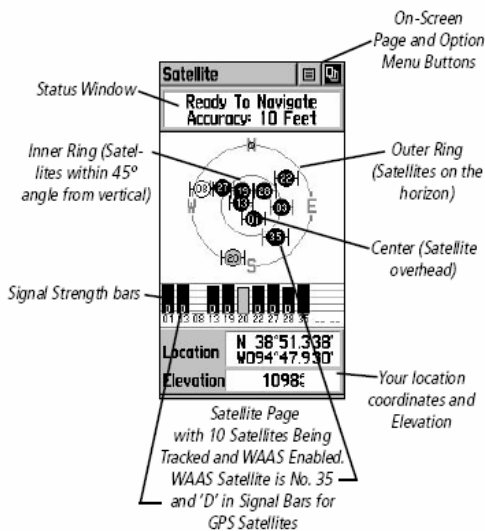


Display Screens

Use the PAGE button on the top right of the receiver to switch between the different screens.

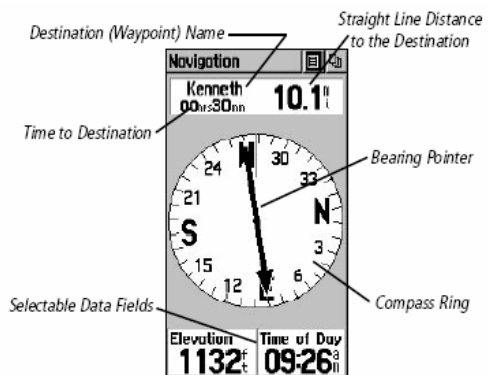


Satellite Page



The dark bars show the satellites you are “locked” on. You need at least 3 bars to use the receiver.

Pointer Page Basics



Go in the direction the arrow is pointing to move towards your waypoint or landmark.

NOTE: You must be moving in order for the GPS unit to determine where you are and which way you are moving.

Marking a Waypoint (Location)

1 – Press and hold the THUMB STICK until the MARK WAYPOINT screen appears with the guy holding a flag.



2 – Your waypoint is automatically assigned a three-digit number. To change the name of the waypoint, use the THUMB STICK button to highlight its name. Use the THUMB STICK to select the new name for the waypoint.

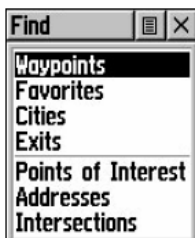
3 – When you are done, use the THUMB STICK to highlight the OK button and press the THUMB STICK button once.

Finding a Waypoint (Location)



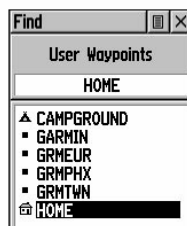
1 - Use the PAGE button to find the main menu. Use the THUMB STICK to go to the FIND option and press the same button to select this option.

You can also press the bottom left button on the receiver to go directly to the Find screen.

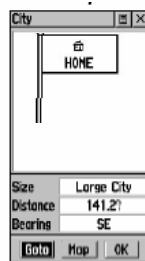


3 - Select WAYPOINTS by pressing the THUMB STICK button.

4 - Choose NEAREST on the next menu.

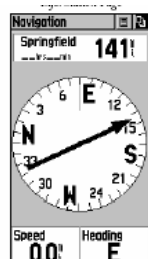


5 - Select the waypoint you want using the THUMB STICK button.



6 - Use the THUMB STICK button to select GOTO at the bottom of the screen.

Remember ...
You must be moving
in order for the
receiver to keep track
of your location!



7 - Use the navigation screen to help you locate your destination. You need to move in the direction of the large arrow. When you get close to your destination, an “Arriving at Destination” message will be displayed.